

Wood's®

Product Catalogue 2019



Air Purifiers

Quiet and efficient air purifiers
with the lowest energy consumption.

Healthier homes since 1970.



Made in Sweden

www.woods.se

www.woods-china.cn

The price of clean air:

3€ yearly

An air purifier from Wood's can run every hour of the day, every day of the year, and still not consume more than 26kWh over the entire year.

That is 4 times less than a low energy light bulb being used the same way.

Wood's believe that the clean air today should not come at the expense of clean air tomorrow.

That is why Wood's air purifiers are made of sustainable materials and have the lowest energy consumption.

Wood's[®]



Table of contents.

I. The Wood's history, from Lidköping to Alingsås

II. A greener choice

III. What is air pollution?

IV. The workings of Wood's air purifiers

V. Patented filter technique - Active ION HEPA

VI. Chem Control Carbon - against gas and odour

VII: Products

Wood's TALL 155

Wood's AL 310

Wood's GRAN 900

VIII. Certifications and test results

IX. Technical specifications



Made in Sweden



Valued Quality. Delivered.



ENERGY STAR







Made in Sweden

Wood's are experts in air quality. Managing the air for 65 years to protect the persons and goods against allergies, moisture, mould, bad odour, air pollution, etc. Wood's air purifiers are designed and built to solve your problem, quickly, easy and permanently. Developed and manufactured in Sweden - from the sheet metal of the body and the filters, to the final assembly. Around the world, Swedish products are known for quality and durability - a legacy we are proud to carry on.

Healthier homes since 1970.

Wood's air purifiers are developed from a Swedish patent, invented by Jan-Olof Wallin. Jan-Olof has dedicated his entire career to finding the best and most innovative air cleaning solutions. Today, over 40 years later, the extensive research has led to some of the best and most advanced air purifiers available.

Innovation and quality.

When developing new products, Wood's always put the consumer use first. This results in highly efficient, reliable and a complete range of air purifiers of top quality with market leading warranties.

Quality

Wood's are known to last and built to handle demanding environments. All our products are designed to be used every day and to use the lowest energy possible.

Wood's®

A greener choice.

Wood's air purifiers are made in Sweden with a dedication to giving you the cleanest air possible, with as little environment impact as possible. That is why Wood's air purifiers are made of Swedish metal and have one of the best energy consumption to CADR ratios of any air purifier.

Eco friendly, human friendly.

We at Wood's believe that we not only need to clean the air of our time, we also need to make sure to keep the air as clean as possible for future generations. Therefore, we have put extra focus on power consumption when developing air purifiers, creating healthier air today and tomorrow.



Green from start to finish.

Dedicated to creating cleaner air, today and tomorrow, Wood's always focus on both the environment and the user - from start of production to the finished product.

Green in production:

Wood's air purifiers have a body of Swedish sheet metal. Metal is a recyclable material that is a good choice for the environment.

By using Swedish made parts, Wood's are also able to keep transports during production to a minimum.

Green in use:

Consuming no more energy than your alarm clock or internet router, Wood's air purifier will leave a small carbon footprint.

Creating a cleaner household air, Wood's air purifiers are also quiet in operations and will not disturb you with disruptive noises.





Wood's

Air pollution

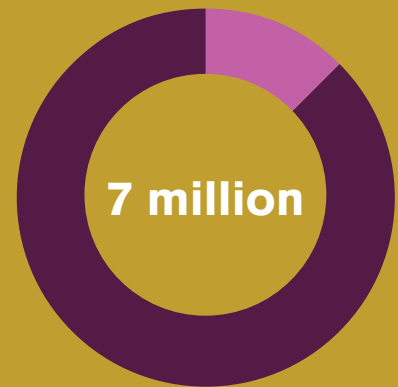
A major global health problem

Did you know that air pollution can lead to several serious diseases, such as stroke, cancer and heart and respiratory diseases?

7 million premature deaths annually

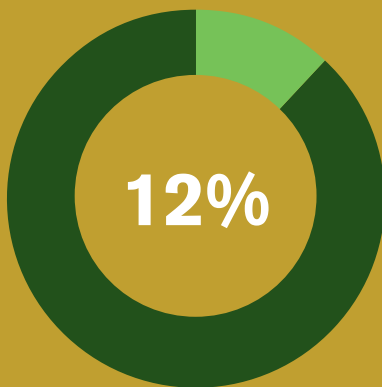
Air pollution is responsible for 7 millions premature deaths annually.

That is 1/8 of all premature deaths globally each year.

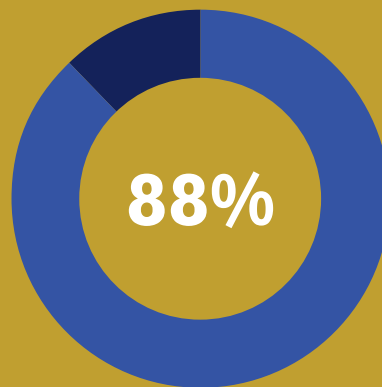


Source: World Health Organization

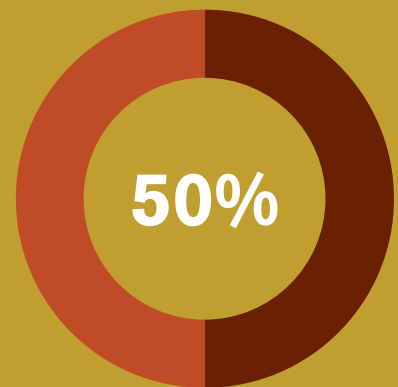
Only 12% live in cities with acceptable levels of air pollution



People living in cities with air pollution levels within WHO recommendations.



People living in cities with air pollution levels above WHO recommendations.



People living in cities with air pollution levels more than 2.5 times above WHO recommendations.

Data from 1600 cities in 91 countries that report air pollution levels. Source: World Health Organization

Control the air pollution levels of your city at www.who.int

What is air pollution?

Air pollution occurs when particles, biological molecules or other harmful materials are introduced into the atmosphere. About half of the global urban population are exposed to air pollution levels more than 2,5 times higher than recommended levels. Energy and transportation are some of the major causes of air pollution.

Air particles indoors.

Outdoor air pollution enters our homes and impairs the indoor air quality. Even if the outdoor air is relatively clean, we introduce a lot of particles into our household air from chemicals, clothes, pets, smoking, dust etc. High amounts of such particles will also affect our health and can lead to allergies, asthma and serious diseases.



Make the air safe again!

By using an air purifier, you remove harmful particles from the indoor air. Instead of breathing in the particles, they stick in the air purifier's filter. Breathing clean air has many health benefits and makes you feel healthier and more refreshed.

It is important that the air purifier is efficient enough to remove small particles, so called fine particulate matter (such as PM_{2,5}). These are most hazardous and the most difficult to remove from the air.

Some of the most common pollutants removed by Wood's air purifiers:

- *PM_{2,5}*
- *PM₁₀*
- *Dust*
- *Pollen*
- *Mould spores*
- *Radon daughters*
- *Chemicals*
- *Pet dander*
- *Exhaust fumes*
- *Cigarette smoke*
- *Virus*
- *Bacteria*
- *...*

The technique

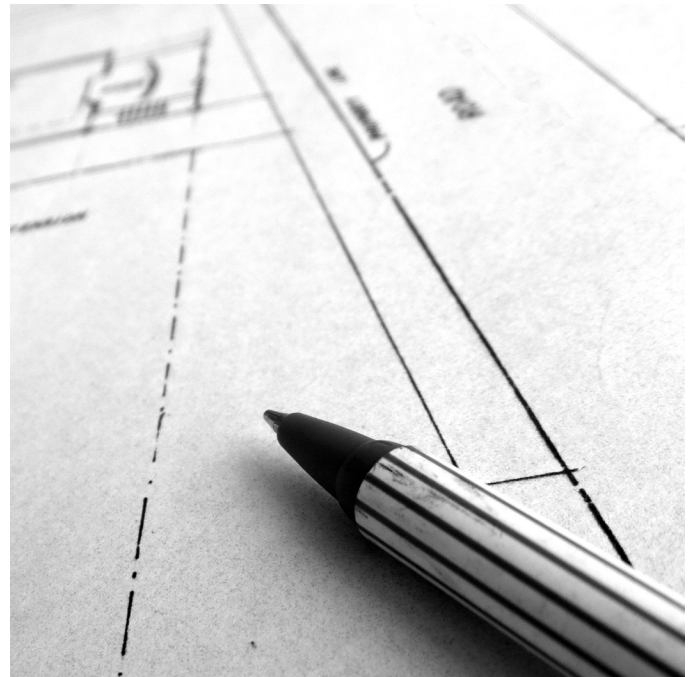
More efficient air cleaning with ionization

Wood's air purifiers use ionization to attract and catch air particles. By ionizing the air particles as they enter the air purifier, the particles are given a light positive charge.

This makes the particles stick together, increasing their size and making them more easily caught. The air particles are also attracted to oppositely charged surfaces.

Reliable parts, from Swedish manufacturers

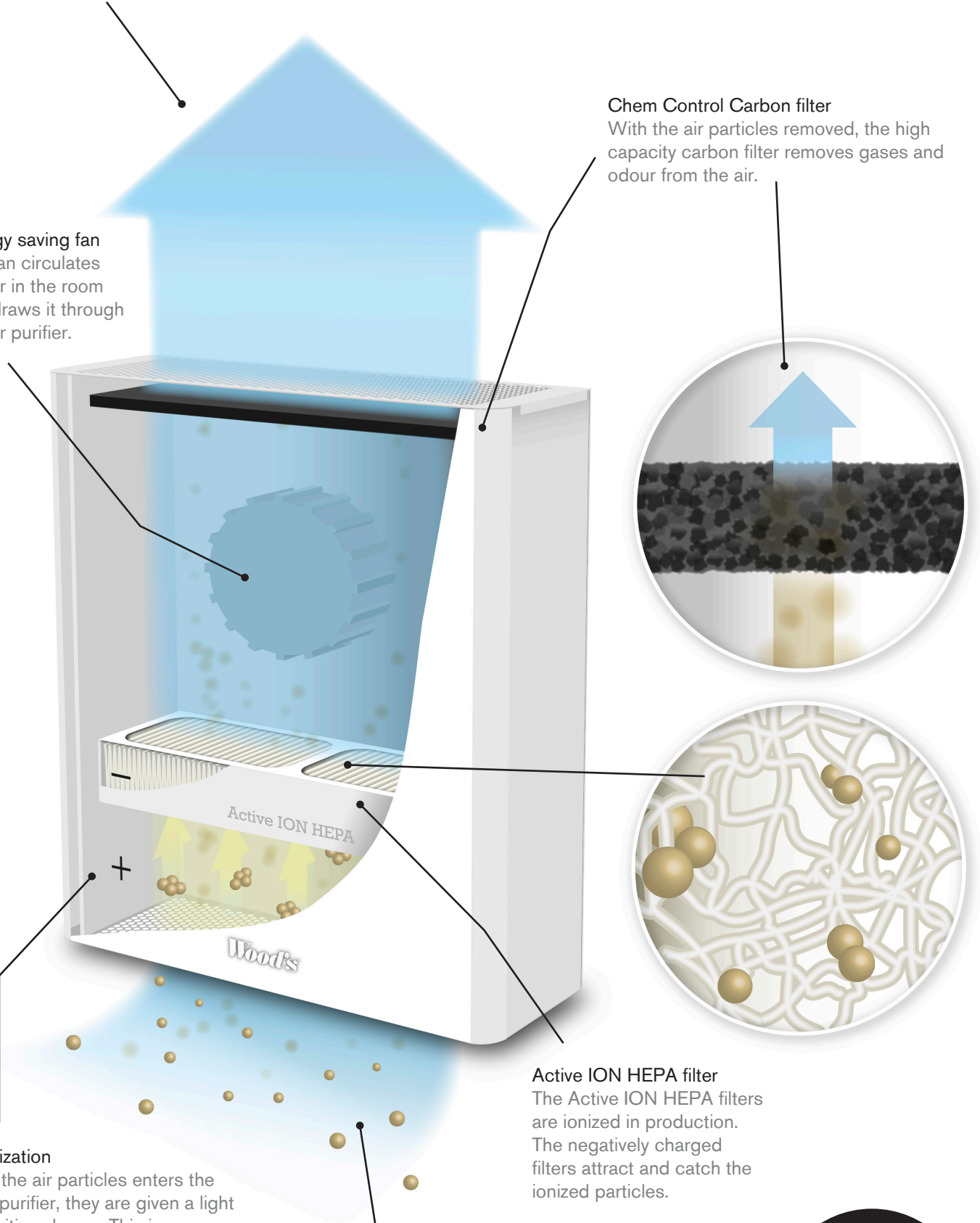
Did you know that almost every part of a Wood's air purifier is manufactured in Sweden? Wood's pay special attention to the capacity, reliability and experience of all suppliers. Only those suppliers that can meet the high demands are allowed to supply parts to Wood's air purifiers.



Clean air
Air clean from particles, gas and odour is circulated out in the room.

Energy saving fan
The fan circulates the air in the room and draws it through the air purifier.

Chem Control Carbon filter
With the air particles removed, the high capacity carbon filter removes gases and odour from the air.



Ionization
As the air particles enter the air purifier, they are given a light positive charge. This increases their size and attracts them to oppositely charged surfaces.

Dirty air
The dirty air is drawn in to the air purifier by the fan.

Active ION HEPA filter
The Active ION HEPA filters are ionized in production. The negatively charged filters attract and catch the ionized particles.

Read more about the patented Active ION HEPA filter on the following page!

Particle filtration

Active ION HEPA - removes 99,98% of harmful particles

Apart from exceptional cleaning capacity, the unique Active ION HEPA filters allow for great airflow and very low energy consumption and noise levels. The Active ION HEPA filters are pre-ionized and can therefore be much sparser than traditional filters. This allows the air to flow almost freely through the filter and still come out free from particles.

The main benefit of using sparser filters is that you don't need any large, noisy and energy consuming fan to push the air through the filter. As the pressure drop in the Active ION HEPA filters is minimal, Wood's can use smaller, energy saving fans to circulate the air in the room and through the air purifier.

The Active ION HEPA filters also ensure more reliable filtration, as no air leaks on the side of the filter. This is always a risk with dense filters, as the air always will take the path of least resistance.

The technique:

1. The air particles are ionized when they enter the air purifier and given a negative charge. The ionized Active ION HEPA filters attract and catch the charged particles.

2. Active ION HEPA filters are less dense than traditional HEPA filters, with the same purification results. Less dense filters means much less energy consumption and lower noise levels as the air flow isn't blocked.

3. Capacity: 99,98% filtration down to particle size 0,0003 mm (50 times smaller than bacteria).

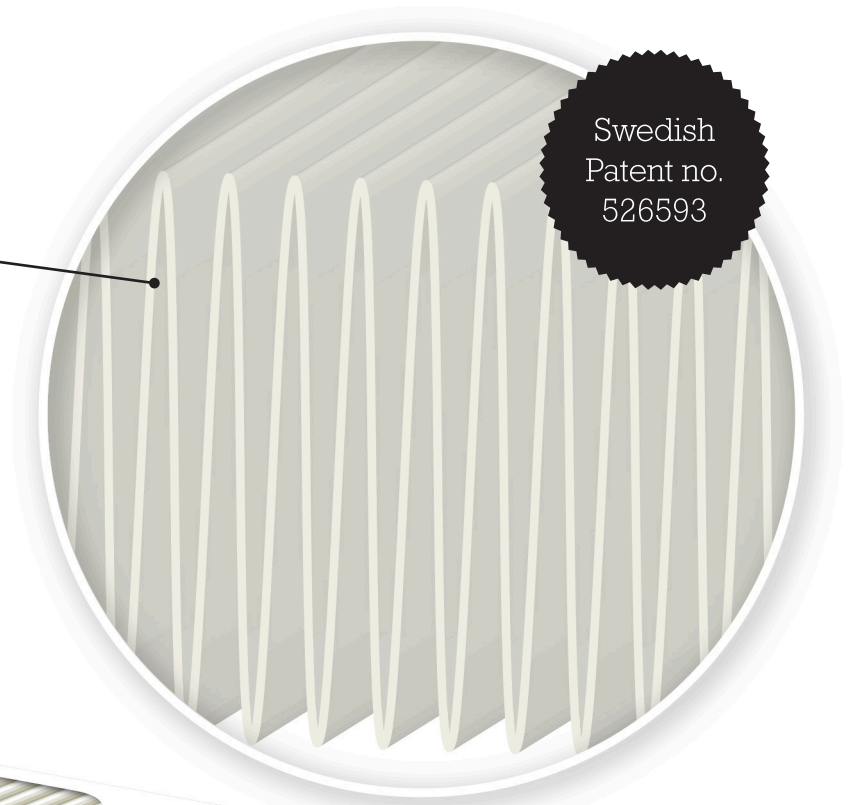
Multiple layers of filtration

One Active ION HEPA filter is made up of multiple layers of pleated filter media. This gives a very large total filter area and exceptional filtration.

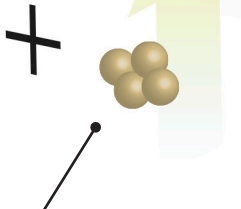
Swedish Patent no. 526593

Clean air

The filtrated air, free from particles, enters the room.



Active ION HEPA



Ionized filters

The Active ION HEPA filters are given a negative charge when they are manufactured. The filters attract and catch the charged air particles.

Ionized air particles

The air particles are ionized when they enter the air purifier. The ionized particles are attracted by the ionized filters.

Why is a less dense filter better?

- Able to use smaller fans.
- A smaller fan is more quiet
- It also consumes less energy.
- No risk of air passing unfiltered (leakage of particles).





Remove smoke, gas and odour

Chem Control Carbon Filter

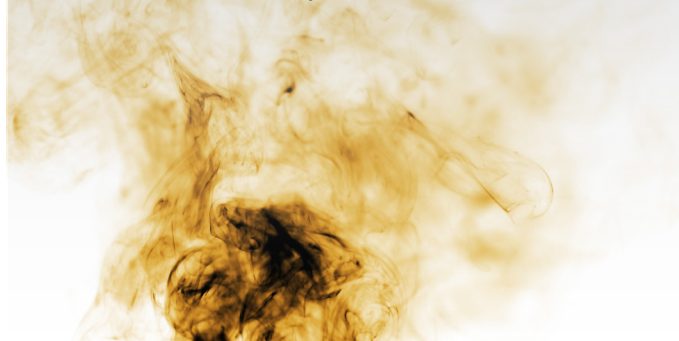
Wood's Chem Control Carbon Filters are made in Germany of excellent quality carbon. The Chem Control Carbon filters are used to remove smoke, gas and odour from the household air. Containing high densities of active carbon, Wood's Chem Control Carbon Filters provide a long-lasting, reliable and highly efficient filtration capacity.

Wood's Chem Control Carbon Filter is available with different amounts of carbon (a higher amount of carbon means a longer lasting filter) for the Wood's AL 300 and Wood's GRAN 900 air purifiers.

How carbon filtration works:

The contaminated air passes through the adsorbent (the carbon). When the gas molecules pass through the microscopic pores in the adsorbent they are adsorbed onto the surfaces through physical bonding (molecular attraction forces).

This is called adsorption.



Gases managed by Wood's Chem Control Carbon Filter:

Acetaldehyde Acetone - Acrolein - Acrylamide - Acrylonitrile - Allyl alcohol - Ammonia NH₃ IC - Amylacetate - Aniline - Arsine IC - Benzene - Petrol (aviation, engine, commercial) - Petrol (Industrial - of type hexane, - of type heptane, - of type octane) - p-Benzoquinone (quinone) - Benzo(a)pyrene - Benzyl chloride - Biphenyl (diphenyl) - Lead, org. pollutants, tetraethyl lead, tetra - methyl lead - n-Butanol (n-butyl alcohol) - Butanols (butyl alcohols) - Butyl acetate - n-Butyl alcohol (n-butanol) - n-Butyl acrylate 4 - Butylcellosolve (butyl glycol, glycolmonobutyl ether) - n-Butylglycidylether - Butyl glycol (glycolmonobutyl ether, butylcellosolve) - Cellosolve (ethyl glycol, glycol monoethyl ether) - Cellosolve acetate (glycol, monoethyl ether acetate) - Cyanides and hydrogen - cyanide IC (as CN) - Cyanogen chloride IC (Cyclohexane, Cyclohexanol, Cyclohexanone) - aliphatic hydrocarbons - Di-(2-ethylhexyl) - phthalate - Diphenyl (biphenyl) - Diglycidyl ether (DGE) - o-Dichlorobenzene - p-Dichlorobenzene - 1,2-Dichloroethane (ethylene dichloride) - Nitrous oxide (laughing gas) N - Dimethylformamide - Dimethyl hydrazines - Dinitrobenzene, all isomers - Dioxane - Efrane (Enflurane, 2-chloro-1,1,2-trifluoroethyl-difluoromethylether) - Enflurane (Efrane, 2-chloro-1,1,2-trifluoroethyl-difluoromethylether) - Epichlorohydrin - Ethanol (ethyl alcohol) - Ether (ethyl ether) - Ethyl acetate - Ethyl acrylate - Ethyl alcohol (ethanol) - Ethyl benzene - Ethyl cyanoacrylate - Ethylenediamine - Ethylene dichloride - (1,2-dichloroethane) - Ethylene glycol (glycol) - Ethylene glycol dinitrate - (nitro glycol, glycol dinitrate) - Ethylene chlorohydrin (2-chloroethanol) - Ethylene oxide - Ethyl ether (ether) - Ethyl glycol (glycol monoethyl ether, cellosolve) - Ethyl chloride - Phenol - p-Phenylenediamine - Phenyl glycidyl ether - Phenyl isocyanate - Fluoride - Fluorides, incl. hydrogen fluoride (as F) IC Capacity - Hydrogen fluoride - Fluothane (Halothane, 1,1,1-trifluor-2-chloro-2-bromoethane) - Formaldehyde - Phosphoric acid, vapour P/IC - Phosphine - (phosphorated hydrogen) P/IC - Phosgene (carbonyl chloride) - Kerosene (aviation, motor) - Freon 113 (1,1,2-trichloro-1,2,2-trifluoroethane) - Phthalic anhydride - Furfural - Furfuryl Alcohol - Glutaraldehyde - Glyceryl trinitrate (nitro-glycerine) - Glycol (ethylene glycol) - Glycol dinitrate (nitro glycol, ethylene glycol dinitrate) - Glycol monobutyl ether (butyl glycol, butyl cellosolve) - Glycol monoethyl ether (ethyl glycol, cellosolve) - Glycol monoethyl ether acetate (cellosolve acetate) - Glycol monomethyl ether - Halothane (Fluothane, 1,1,1-trifluor-2-chloro-2-bromoethane) - Heptane - Hexamethylene - diisocyanate (HDI) - n-Hexane - Hexane, except n-hexane - Hydrazine - Hydroquinone - 2-Hydroxyethyl acrylate - Isophorone - Isophorone diisocyanate (IPDI) - Isopropanol (isopropyl alcohol) - Isopropyl alcohol (isopropanol) - Isopropyl nitrate - Iodine - Carbonyl chloride (phosgene) - Quinone (p-benzoquinone) - Chlorine - Chlorine cyanide - (cyanogen chloride) - Chlorine dioxide - 2-Chloroethanol (ethylene chlorohydrin) - Chlorophenols and salts - Chloroform - Chloroprene (2-chloro-1,3-butadiene) - 2-Chloro-1,1,2-trifluoroethyl-difluoromethylether (Efrane, Enflurane) - Hydrogen chloride - Carbon dioxide - Carbon disulphide - Carbon monoxide (carbon oxide) N - Carbon oxide (carbon monoxide) - Carbon tetrachloride - Cresyl glycidyl ether - Mercury, alkyl groups (as Hg) IC - Nitrogen dioxide NO₂ - Nitrogen oxide NO N White spirit - Laughing gas (nitrous oxide) NO, N₂O N - Maleic anhydride - Methanol (methyl alcohol) - Methyl acrylate - Methyl alcohol (methanol) - Methyl bromide - Methyl n-butyl ketone - Methyl cellosolve - (glycol monomethyl ether) - Methyl cyanoacrylate - Methylene diphenyl - diisocyanate (MDI) - Methylene chloride - Methyl ethyl ketone (MEK) - Methyl ketone peroxide - Methyl isobutyl ketone (MIBK) - Methyl iodide - Methyl chloride - Methyl chloroform (1,1,1-trichloroethane) - Methyl methacrylate - Naphthalenes, chlorinated - Naphthalene diisocyanate (NDI) - Nitro benzene - Nitro-glycerine (glyceryl trinitrate) - Nitro glycol (ethylene glycol dinitrate, glycol dinitrate) - 2-Nitropropane - Nonanes - Octanes - Ozone - PCB (polychlorinated biphenyls) - Pentachlorophenol and salts - Pentanes - Perchloroethylene (tetrachloroethylene) - Petroleum naphtha - Polychlorinated biphenyls (PCB) - n-Propanol (n-propyl alcohol) - n-Propyl alcohol (n-propanol) - Propylene oxide - Pyridine - Raw cotton (cotton dust) - Nitric acid - Hydrogen selenide - Styrene - Sulphur dioxide IC - Sulphuric acid, vapour - Hydrogen sulphide IC Turpentine - Tetraethyl lead (as Pb) - Tetrahydrofuran - Tetrachloroethylene (perchloroethylene) - Tetrachlorophenol and salts - Tetra methyl lead (as Pb) - Toluene - Toluene diisocyanate (TDI) - 1,1,1-Trifluor-2-chloro-2-bromoethane - (Halothane, Fluothane) - 1,1,1-Trichloroethane (methyl chloroform) - Trichloroethylene - Trichlorophenol and salts - 1,1,2-Trichloro-1,2,2-trifluoroethane (Freon 113) - Trimellitic anhydride (TMA) - Trimethylbenzene, all isomers - Trimethyl hexamethylene - diisocyanate (TMDI) - Vinyl acetate - Vinylidene chloride - Vinyl chloride - Vinyl toluene - Xylene - Acetic acid - Acetic anhydride. ■



10 years warranty program

Extend your warranty with Wood's filter program.

Thanks to the high capacity and quality of the air purifiers and the Active ION HEPA filters, Wood's are now able to extend the product warranty of all our air purifiers, dramatically!

Register your air purifier and replace the Active ION HEPA filters when they are expired and receive the full 10 year warranty.

After registering at the Wood's website, we will send you a friendly reminder when a filter change is due. Of course, you can choose to exit the filter program at any time.

Wood's filter program

10

10 years warranty

Register online and replace the filters regularly to receive the extended warranty.

Enter the filter program at
warranty-woods.com



Wood's® TALL 155

Slim, compact and quiet - the Wood's TALL 155 is the perfect choice for bedrooms or other areas that need to be as silent as possible.

Mount the TALL 155 to the wall, or use it freestanding, and it will instantly provide you with cleaner and healthier air, consuming no more energy than your alarm clock.



- 15-20 m²
- 4-18 W
- From 27dB
- Wall mounted
- Legs as accessory
- Active ION HEPA filter
- Stepless fan speeds



Easy access for filter change.

Wood's TALL 155 are delivered with the patented Active ION HEPA™ filter. The front cover of the air purifier allows for easy access for filter change.

Wood's

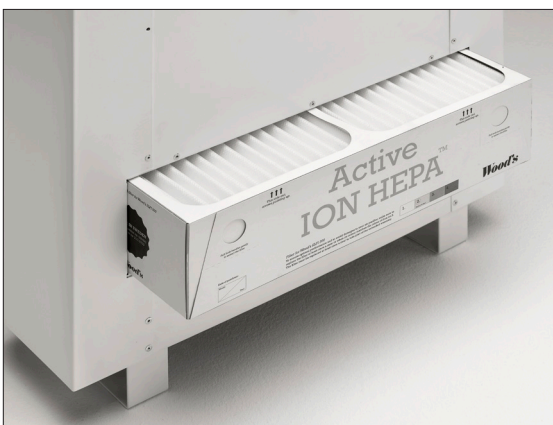


Wood's

Wood's® AL 310

Powerful and compact - with quiet operations and low consumption, the Wood's AL 310 is a highly efficient and versatile air purifier.

It's discrete yet elegant design makes the air purifier blend in with most environments, as it quietly and rapidly creates a healthier living environment.



Easy access for filter change

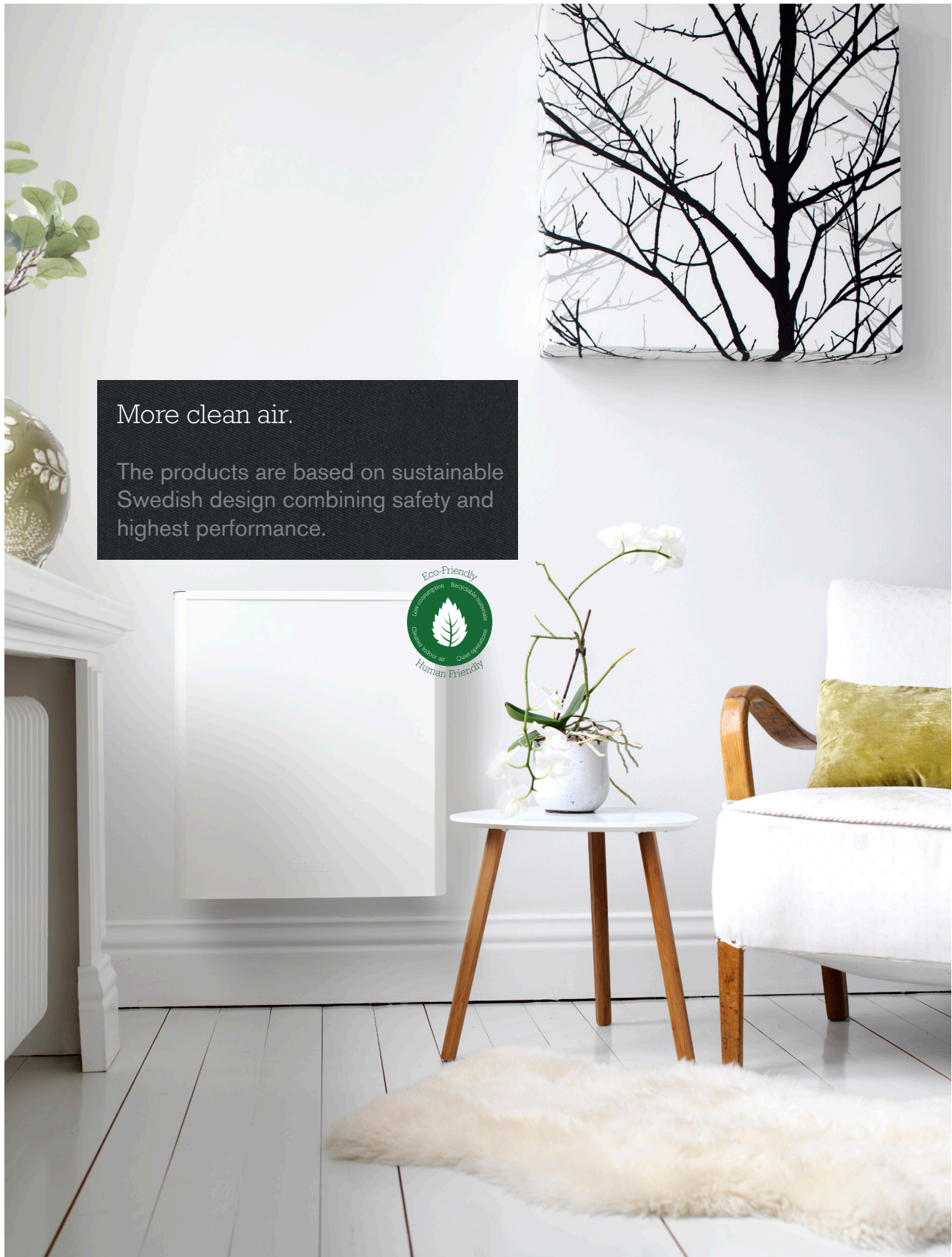
Wood's AL 310 are delivered with the patented Active ION HEPA™ filter. The back cover of the air purifier allows for easy access for filter change. If you are using a carbon filter, it is placed on the top of the unit, underneath the top cover.

Wood's®

Fresh air is one of the most important conditions for life. You will find our customers in a vast variety of businesses and walks of life; for home and professional use. In short, our costumers are everybody who takes their health seriously! Healthier life for you and your family!

More clean air.

The products are based on sustainable Swedish design combining safety and highest performance.



Designed to fit your environment.

Use Wood's air purifiers in groups and achieve the ultimate effect of larger rooms or offices. Wall-hung or standing options for your indoor environment.

Wood's filter program

10

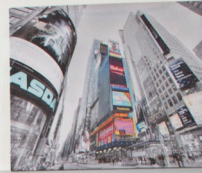
10 years warranty

Register online and replace the filters regularly to receive the extended warranty.



Easy construction for wall hangings.

Our range of premium air purifiers provides trustworthy solutions for a healthier life for you and your family.



Wood's® GRAN 900

One of the most powerful air purifiers available, the Wood's GRAN 900 still has very moderate energy consumption and noise levels.

Built to handle large and demanding areas, the GRAN 900 have double Active ION HEPA filters for the fastest and most efficient cleaning capacity.



- 60-80 m²
- 24-80 W
- From 30dB
- 2 x Carbon filters (optional)
- 4 fan speeds
- 2 x Active ION HEPA filters



Easy access for filter change.

Wood's GRAN 900 are delivered with double Active ION HEPA™ filters. Turn to open the front latch to access the filters. If you're using carbon filters, they are placed outside of the Active ION HEPA™ filters.



Certifications and test results

Wood's air purifiers have gone through rigorous testing. With top results in both domestic and international tests, you can rest assured that Wood's air purifiers delivers not only on the promise of clean air, both also on the promise to keep noise levels and energy consumption as low as possible.

The Association of Home Appliance Manufacturers (AHAM) is world leading in the testing of home appliances, and have tested hundred of air purifiers on cleaning capacity and energy consumption. The AHAM VERIFIDE and ENERGY STAR are awarded only to the units that fulfill AHAM's high demands.

What does CADR mean?

CADR stands for "Clean Air Delivery Rate". CADR is a measurement that combines air flow with filtration capacity and is the ratio of clean air that the air purifier can deliver based on its air flow. The closer the CADR of an air purifier is to its air flow, the more efficient it is.

For example, an air purifier with the air flow of 100m³/h would have a best possible CADR of 100.

Wood's TALL 155

Wood's AL 310

Wood's GRAN 900



CADR Tobacco smoke	84
CADR Dust	94
CADR Pollen	113



CADR Tobacco smoke	132
CADR Dust	145
CADR Pollen	161



CADR Tobacco smoke	552
CADR Dust	555
CADR Pollen	588



Total energy consumption	18 W
Dust CADR / Wattage	5,4
Total measured standby power	0,5 W



Total energy consumption	18,7 W
Dust CADR / Wattage	7,6
Total measured standby power	0,5 W



Total energy consumption	75 W
Dust CADR / Wattage	7,7
Total measured standby power	0 W

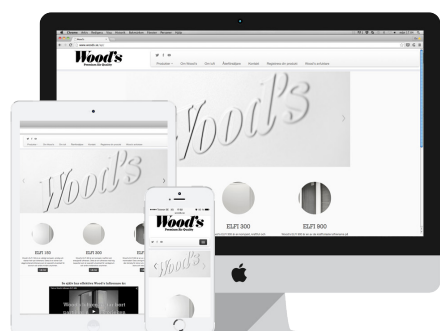
Technical data

TALL 155

AL 310

GRAN 900

Fan speeds	Stepless	Stepless	4
Recommended area	10-32 m ²	20-50 m ²	60-80 m ²
Power consumption	4-18 W	4-19 W	24-75 W
Noise level	From 27 dB	From 27 dB	From 30 dB
Purification level	99,98%	99,98%	99,98%
Voltage	12V	12V	220-230 V
Weight	6,9 kg	12 kg	15,2 kg
Dims. LxWxH	500x105x502	510x160x610	220x565x615
Number of filters	1 x Active ION HEPA	1 x Active ION HEPA	2 x Active ION HEPA
CADR Smoke	84 m ³ /h	132 m ³ /h	552 m ³ /h
CADR Dust	94 m ³ /h	145 m ³ /h	555 m ³ /h
CADR Pollen	113 m ³ /h	161 m ³ /h	588 m ³ /h
CADR to wattage	5,4	7,6	7,7
Art. no replacement filter	WHE1501	WHE301	WHE901 (2-pack)
Accessories		Carbon filter Pleat: 130g Granulate: 600g	Carbon filter Pleat: 100g (2-pack)

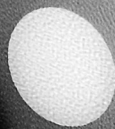
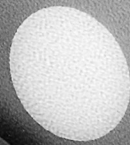


Follow the Wood's story online
at www.woods.se

Wood's

AIR PURIFIER ELFI 900

OFF



SWEDEN

www.woods.se

Distributor:

TES Scandinavia AB
Maskingatan 2-4. 441 39, Alingsås, Sweden.
Tel. +46(0)317613610